

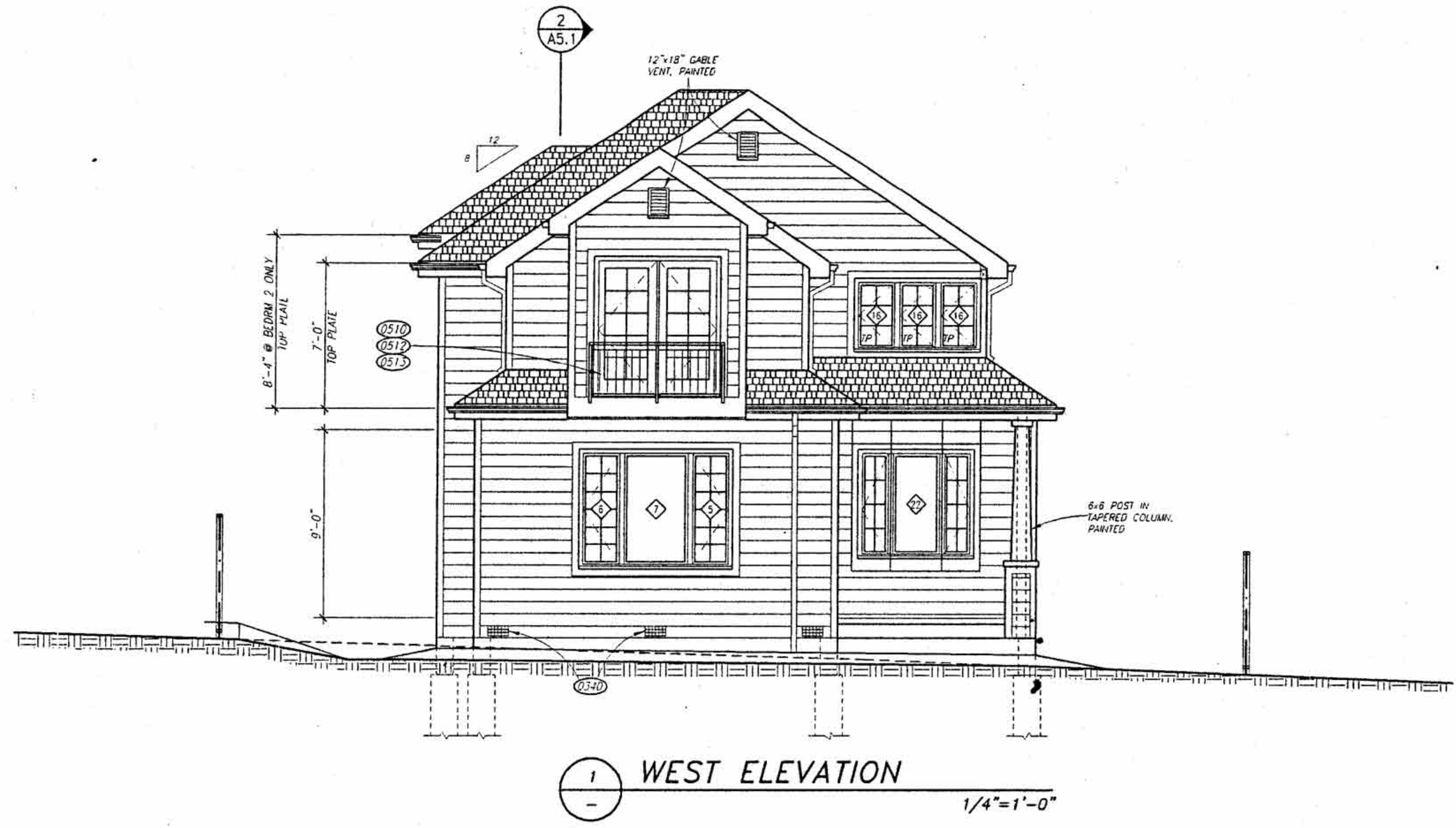
Only base drawing
is by M. Froehlich.
All heavy & color
type is by others.

MF
Michael
Froehlich
Architect

942 KIRKHAM STREET
SAN FRANCISCO, CA 94122
PHONE: 415.681.8268
FAX: 415.681.9342
EMAIL: MFROEHLICH@ATTN.COM

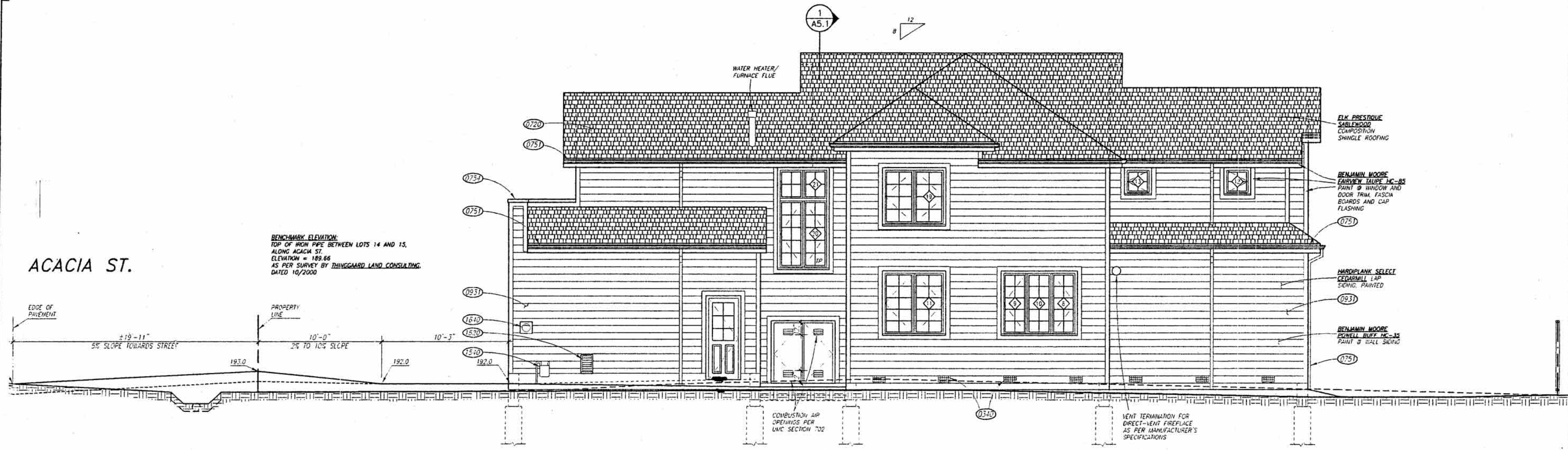


SEE SHEET A5.1 FOR
DAYLIGHT PLANE AND
HEIGHT LIMIT



1 WEST ELEVATION
1/4" = 1'-0"

WEST ELEVATION
NORTH ELEVATION



BENCHMARK ELEVATION:
TOP OF IRON PIPE BETWEEN LOTS 14 AND 15,
ALONG ACACIA ST.
ELEVATION = 189.66
AS PER SURVEY BY THINGGARD LAND CONSULTING,
DATED 10/2000

ACACIA ST.

2 NORTH ELEVATION
1/4" = 1'-0"

NEW SINGLE-FAMILY DWELLING AT:
ACACIA ST.
MONTARA, CALIFORNIA
APH: 036-121-410, LOTS 15 + 16

PROGRESS PRINTS

REVISIONS:		
NO.	DESCRIPTION	DATE

DATE: 09/12/05
PROJECT NO. 05.17
DRAWN BY: MF

DRAWING NO.
A6.2
6 OF 6

1050 Acacia, Montara - Plans Approved by CDRC 11/10/05 _ Drawing No. A6.2
Submitted to County 9/13/05

Exhibit D-6
6 of 6

A6.2